

Installing the Stealth Series 3 Configuration Suite

A guide for Samurize Noobs by Lostboy79

<http://www.lostboy79designs.wordpress.com>

Introduction

Ok, so you've stumbled across this brilliant little application called Samurize and you've seen some of the cool things it can do – either on my blog or elsewhere on the internet - but you haven't got a clue how you take that stuff and make it work for you and your PC.

In this guide, I'll try and talk you through the Samurize installation process and tell you how to install my **Stealth Series 3 Configuration Suite** thereafter.

Please bear in mind that I'm *not* going to go into too much detail about how every last plugin and script I've used in the configuration suite works. However, I will try and cover enough so that by the time you've read this guide, you'll have a pretty good idea about how my configuration suite does what it does.

If you're really having trouble with something, just drop a comment onto the relevant post on my blog and I'll get back to you with a suitable answer as soon as I can. I might not be able to answer every question but I'll do my best to help you where I can so don't be afraid to ask!

One last thing before we get going – If you intend to use the **Stealth Series 3 Winamp Slider**, I'm going to assume you've already got Winamp 5.xx installed as your preferred media player. If you don't use Winamp version 2.xx, 4.xx or 5.xx currently but you have another media player such as iTunes or Windows Media Player, you may need to adapt things accordingly.

It shouldn't be too tricky but Samurize doesn't play nicely with every single media player out there and I only know about Winamp, so you may need to do some further investigations if you're having trouble with your particular media player.

Let's do it then!

Section 1: Installing Samurize

If you've already got Samurize installed, you can skip this step and go to **Section 2**.

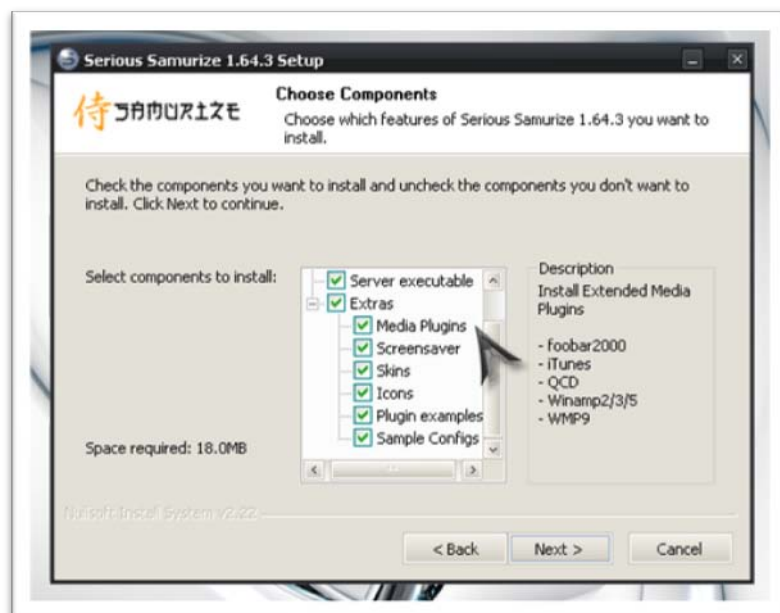
1. Download Samurize from here: <http://www.samurize.com>

Note that the Samurize site is being migrated to a new server as I write this guide (August 2009) so if the above link is no longer valid, you should probably try this one: <http://www.samurize.us> instead.

2. Install Samurize, making sure that you check the **Media Plugins** option when it's time to choose the components for installation, as shown here.

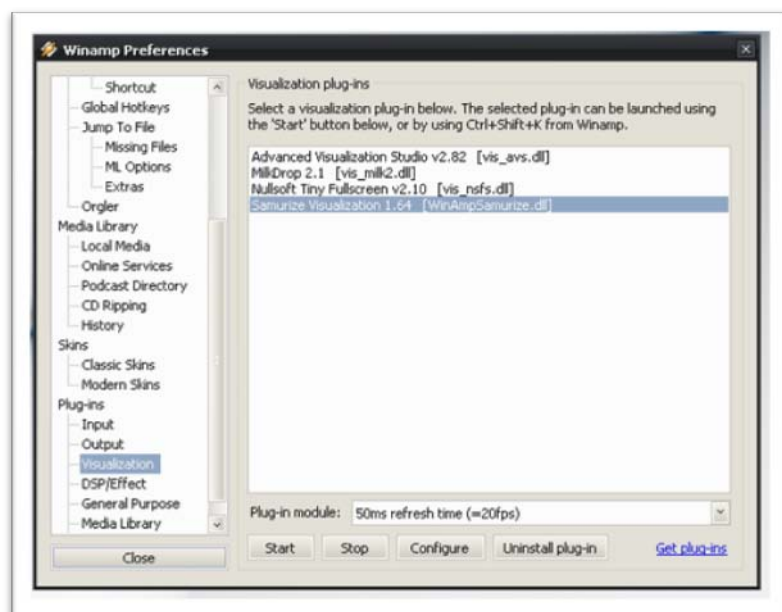
You need to do this to make the Stealth Series 3 Winamp Slider function correctly.

3. Do whatever you need to do to install Samurize successfully (you may need to reboot after the installation finishes) and then go to **Section 2**.



Section 2: Configuring the Winamp plugin

1. Navigate to your Winamp Plugins folder (usually C:\Program Files\Winamp\Plugins) and look for these two files:
 - WinampSamurize.dll
 - WinampSamurize.ini
2. If they're not there, chances are you forgot to install the **Media Plugins** when you installed Samurize. No problem – just repeat the instructions in Section 1 of this guide.
3. If the files are there though, open Winamp and go to the Main Menu (in the top-left corner) and choose **Options > Preferences**. You can just press Ctrl+P to open the Preferences dialog box too of course.
4. Go down to **Plug-ins > Visualization** and select the **Samurize Visualization 1.64 plugin**. Then you can close the Preferences dialog and exit Winamp for now.
5. Congratulations - now you've done everything you need to do to make the **Stealth Series 3 Winamp Slider** show your album covers and do all that great EQ spectrum visualization stuff!



There's still a little more to do before everything else will work though – move on to **Section 3** now.

Section 3: Installing the Stealth Series 3 Configuration Suite

1. Download my **Stealth Series 3 Configuration Suite** if you've not done so already. You can get it from here: <http://www.samurize.com/modules/mydownloads/singlefile.php?cid=11&lid=2305>

2. Unzip the contents straight into your Samurize folder (**C:\Program Files\Samurize** by default).

If you're asked to overwrite some files when you unzip, I'd recommend saying "No" when prompted because it means you've already got some - or all - of the relevant plugins, scripts and skins installed on your PC. It's up to you though.

3. There are a couple of other files you need which I couldn't include in my download for one reason or another, so you should also copy these into the appropriate folders too:

- Copy these two into your default **Samurize\Plugins** folder:
 - Gmail Account Checker Plugin
<http://www.samurize.com/modules/mydownloads/singlefile.php?cid=7&lid=1455>
 - saRSS Plugin
<http://www.samurize.com/modules/mydownloads/singlefile.php?cid=12&lid=1896>
- Copy this font into you **Windows Font** folder (if you don't know how, just unzip the Continuum font folder to a temporary location then drag and drop the entire contents of it straight into your **Control Panel > Fonts** folder afterwards):
 - **Continuum Bold Font (from the Continuum Font Family)**
http://www.dailyfreefonts.com/download.php?font=4111_Continuum.zip

4. Now everything's in place, you're ready to set up your Samurize instances. Go to **Section 4**.

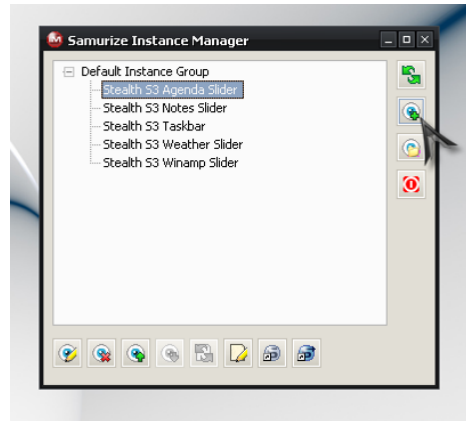
Section 4: Setting Up the Samurize Instance Manager

1. The Instance Manager is a fantastic little tool that helps you control all the Samurize configs you want to run.

You can get to it (this is the default path) by going to your **Windows Start Menu > All Programs > Serious Samurize 1.64.3 > Tools > Instance Manager**.

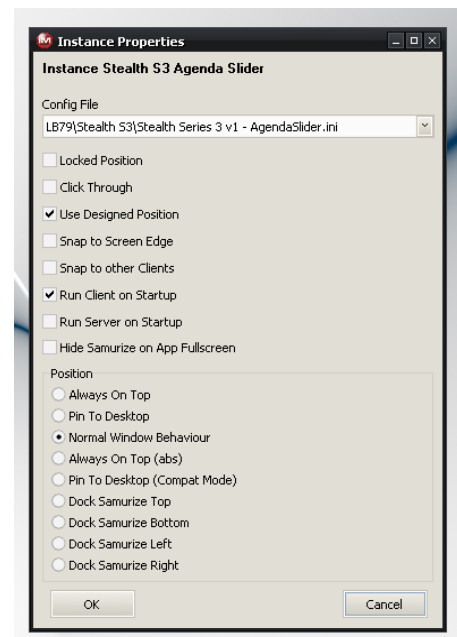
2. Add a new instance for every configuration in the Stealth Series 3 suite, as shown in the image here.

To save you some hassle later, it's a really good idea to name each instance *exactly* as I've done in this image. It's not essential but when I refer specific instances later in this guide, these are the names I'll be using to identify each one.



3. Select the instance called **Stealth S3 Agenda Slider**, then click the **Edit Instance/Group** button in the bottom left corner (it's the eye and the pencil icon).

4. Set the options up like this. Basically, you're linking the instance to the correct config file and dictating how that instance will function. You can change the way it functions later but for now, I'd recommend you just use exactly that same settings I've used here.



5. Repeat this process for each *sliding* instance/config in the suite. The settings should be the same, aside from the Config File option obviously.

6. The **Stealth S3 Taskbar** doesn't slide and if you intend to put your ObjectDock or your Rocketdock over the top of it like I do, you should set the position of it to **Pin To Desktop** as opposed to **Normal Window Behaviour**.

7. You'll note that I've *not* set up an instance for the **Stealth S3 RSS Slider** in this demonstration. I had some problems with that particular config after I made it and I don't know how to rectify them yet.

You might not have the same problems on your PC so use it if you want to but be warned, it regularly hangs on my PC and I have to reload that instance to get it working again. It's not a major problem (just irritating really) but I'll update it as soon as I figure out a solution.

8. Anyway, assuming you stuck with everything except the RSS Slider like I've done so far, you should be fine to move on to **Section 5** now.

Section 5: Starting up Each Instance in the Right Place

If you're impatient and you want to throw caution to the wind, just launch each instance right now via the Instance Manager (it's the eye and the green up arrow icon). In fact, you should probably do that now anyway.

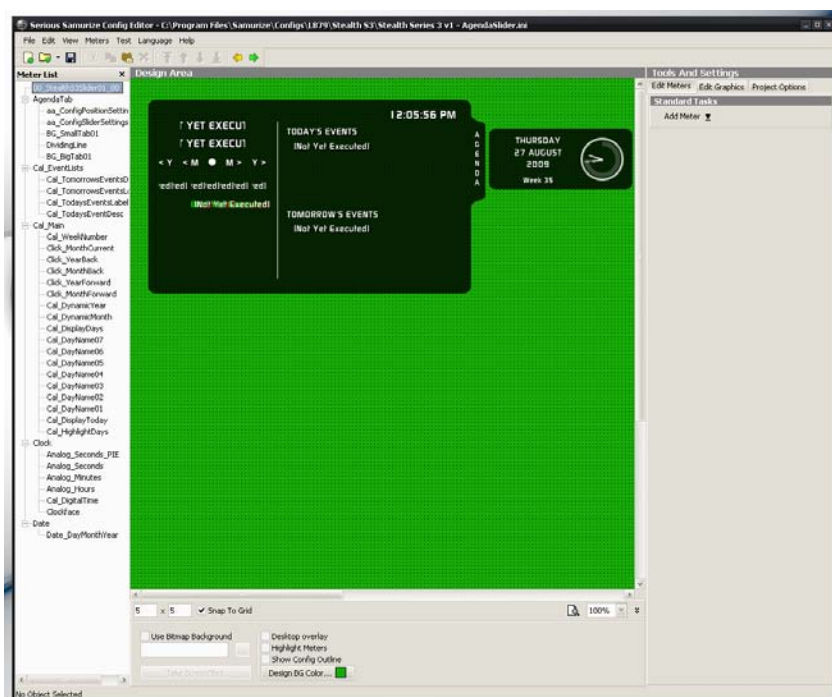
If your display resolution is 1680x1050 pixels like mine (and you've made no mistakes setting all this stuff up!), you should find everything sits on screen in the correct place and that you can start clicking tabs and all that sort of thing. You may even spend the next 10 minutes clicking tabs in and out or just for fun, and so you should. It's nice isn't it?

However, if your display resolution is *not* 1680x1050 pixels then you might find a few things need moving or resizing to suit your desktop area.

Either way, you're going to have to dive into the Samurize **Config Editor** to adjust a few bits and pieces now. If you've not seen the Samurize Config Editor before, fear not; it's your friend. Like all friends, it's a pain in the arse sometimes but you will come to love it because it's where all the magic happens.

1. In the Samurize **Instance Manager**, select the Stealth S3 Agenda Slider and click the **Edit Config File** button (it's the paper and pencil one). This will open the config file in the Samurize **Config Editor**. Hopefully, you'll see this.

You can see the Meter List down the left-hand side, the main window in the middle and then the Tools and Settings over on the right-hand side.



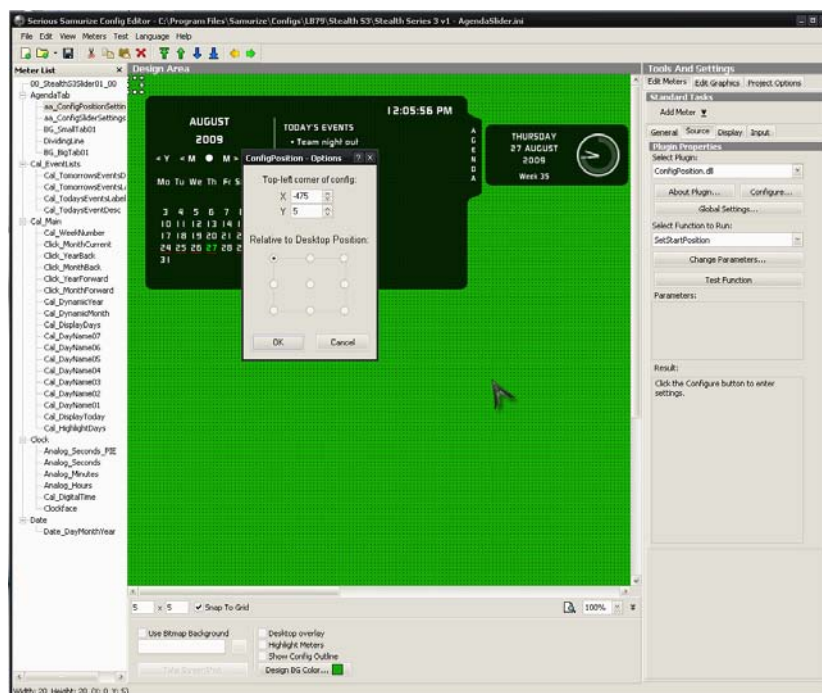
2. Some of the plugins need to be executed before you can see what they're supposed to show you. To execute them, press **F5** on your keyboard or go to **Test Menu > Test all scripts and plugins**.
3. Assuming you don't have any errors, you'll see the plugins/scripts change everywhere it said **[Not Yet Executed]** just a moment ago.
4. Now, all the meters in this config are organised into groups as you can see down the left side of the screen. Expand the group called **AgendaTab** and select the meter called **aa_ConfigPositionSettings_aa**.

- This particular meter dictates exactly where the config appears on screen when the instance is first launched or reloaded.

- With the meter selected, hop over to the right-hand side to the Tools and Settings then click on **Source > Configure**. You'll see something like this.

Basically the X and Y values here tell the *ConfigPosition* plugin to load the config off screen by 475 pixels and down

the screen 5 pixels from the upper left corner of the config. Note that this is in relation to the corner of the config file itself, not actually the corner of your desktop/monitor. I hope that makes sense!



- If you need to adjust the loading position, do it here. You'll find a meter called **aa_ConfigPositionSettings_aa** in all of the other configs too so you can adjust them in exactly the same way.
- After you've made your changes, save your file, flip back over to the **Instance Manager** and reload the config (it's the green reload icon at the bottom) to see how your changes affect the slider in practice. Tweak it some more if you need to, saving the file and reloading it via the **Instance Manager** as many times as is necessary.
- If you're happy with the starting position of the config, you can close the **Config Editor** and move on with **Section 6**.

Section 6: Sliding Each Config in and out of View

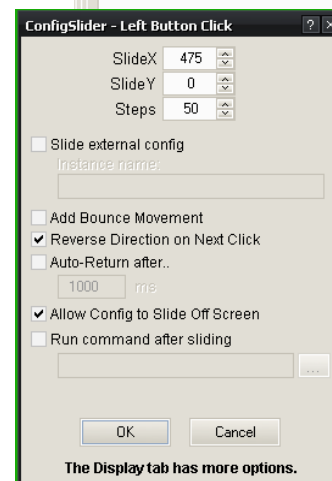
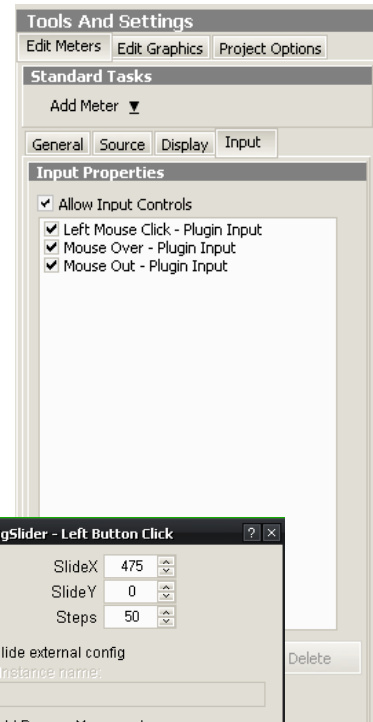
In each sliding config, there's a meter called **aa_ConfigSliderSettings_aa** under the appropriate tab group. This meter controls how far the config slides and in which direction.

1. Using the **Stealth S3 Agenda Slider** as an example again; open the config in the **Config Tool** just as described in the previous section.

2. This time, click on the **aa_ConfigSliderSettings_aa** meter, which is in the **AgendaTab** group. Hop over to the Tools and Settings on the right side of the screen and click the **Input** tab. You'll see this.

These three input controls dictate how a plugin should respond when certain things happen. Select the one that says **Left Mouse Click – Plugin Input** and then click the **Configure Plugin** button when it becomes available.

3. You'll see the ConfigSlider plugin options appear. You can see from the second image here that it's set to slide the config 475 pixels along the X-axis and 0 pixels along the Y-axis at a rate of 50 steps.
4. Adjust the SlideX value if you need to, along with the number of steps (more steps tends to make the slider run slower so decrease the value if things look a bit jumpy when the config is in motion).
5. When you're done, save and reload the config via the Instance Manager until you're happy with it, then close the **Config Editor**.
6. Now you can move on to **Section 7**.



Section 7: Ok dude, now WTF do I do?!?!?

I fully expect the vast majority of you – particularly if you’re not experienced Samurize users – to still have at least one or two questions at this point. I’ll try and briefly answer a few that I anticipate right now but if you’ve got any others, please just let me know by dropping a comment onto my blog and I’ll get back to you as soon as I can.

1. Why doesn’t my unread email value show up?

You need to add the Gmail Account Checker plugin to your Samurize\Plugins folder. You can download it from here:

<http://www.samurize.com/modules/mydownloads/singlefile.php?cid=7&lid=1455>

2. How do I get the CPU temperatures to work?

I use an application called SpeedFan, which you can download from either of these locations:

http://download.cnet.com/SpeedFan/3000-2094_4-10540297.html

<http://www.almico.com/sfdownload.php>

You can also use an application called MotherboardMonitor to do a similar thing but I’ve always used SpeedFan myself. I set it to run on startup along with my configs.

You may need to tweak the CPU Temperature meters in the Stealth Series 3 Taskbar config to match the index numbers with your default SpeedFan settings. If you get stuck, give me a shout.

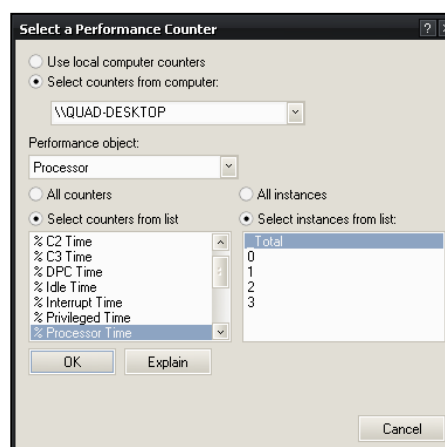
3. Why don’t the CPU graphs/bars/percentages on the Stealth Series 3 Taskbar work?

All of these meters use ‘Performance Monitor’ data (PerfMon for short). Essentially, you just need to point each meter at the right PerfMon data. To do this, open the Stealth S3 Taskbar config up in the Samurize **Config Editor**.

Taking the meter called **CoreTotalGraph** as an example, select the meter then go to the Source tab on the right side of the screen and you’ll see the PerfMon settings there.

Click the **Change Counter** button and wait a moment. Click **OK** if you get a message box which says “Unable to Connect to Machine” and then you’ll be able to alter the PerfMon settings.

Note that I’ve selected my computer at the top, set the Performance Object to **Processor**, selected the **% Processor Time** counter and then finally I’ve chosen the **_Total** instance from the list.



I’ve got 4 cores in my PC so that’s why there’s the numbers 0 – 3 there too. You’ll have less numbers if you’ve only got one or two cores in your PC of course.

4. Why don’t the network graphs/values on the Stealth Series 3 Taskbar work?

This is similar to the last answer – it’s PerfMon data that probably just needs pointing at the right counters on your PC. You can get to the network counters in much the same way as I

outlined in the previous answer however, you'll need to choose the **Network Interface** performance object instead of the **Processor** object this time. Also make sure you select the appropriate network connection in the list of instances.

5. Why don't I see any of the Weather icons in the Stealth S3 Weather Slider?

You haven't downloaded them yet or you've put them in the wrong location and the config is looking for them in the wrong place.

If you haven't downloaded them yet, you can find them here:

<http://lavana.deviantart.com/art/Flat-Weather-Icons-32021664>

And this is where they need to be stored for the Weather Slider to pick them up first time:

C:\Program Files\Samurize\Icons\Flat Weather Icons\Flat Weather Icons English\Flat White\

6. Why do I see the weather for the wrong city?

I included a user guide in the original download which covered this subject. Look there if you can't change the weather to your city!

Right, that's me done for now. I really hope this guide has helped you on your way with Samurize and my configuration suite.

I know I keep harping on about it but really, if you need help with anything else then just let me know. I'd also like to plug the new Samurize website a bit whilst I'm here, which is at:

<http://www.samurize.us>

Please do make a point of registering there and asking other people for help when you need it because things will only get better if we build a better community of developers, designers and stuff like that.

Thanks for reading!

LB79

<http://www.lostboy79designs.wordpress.com>